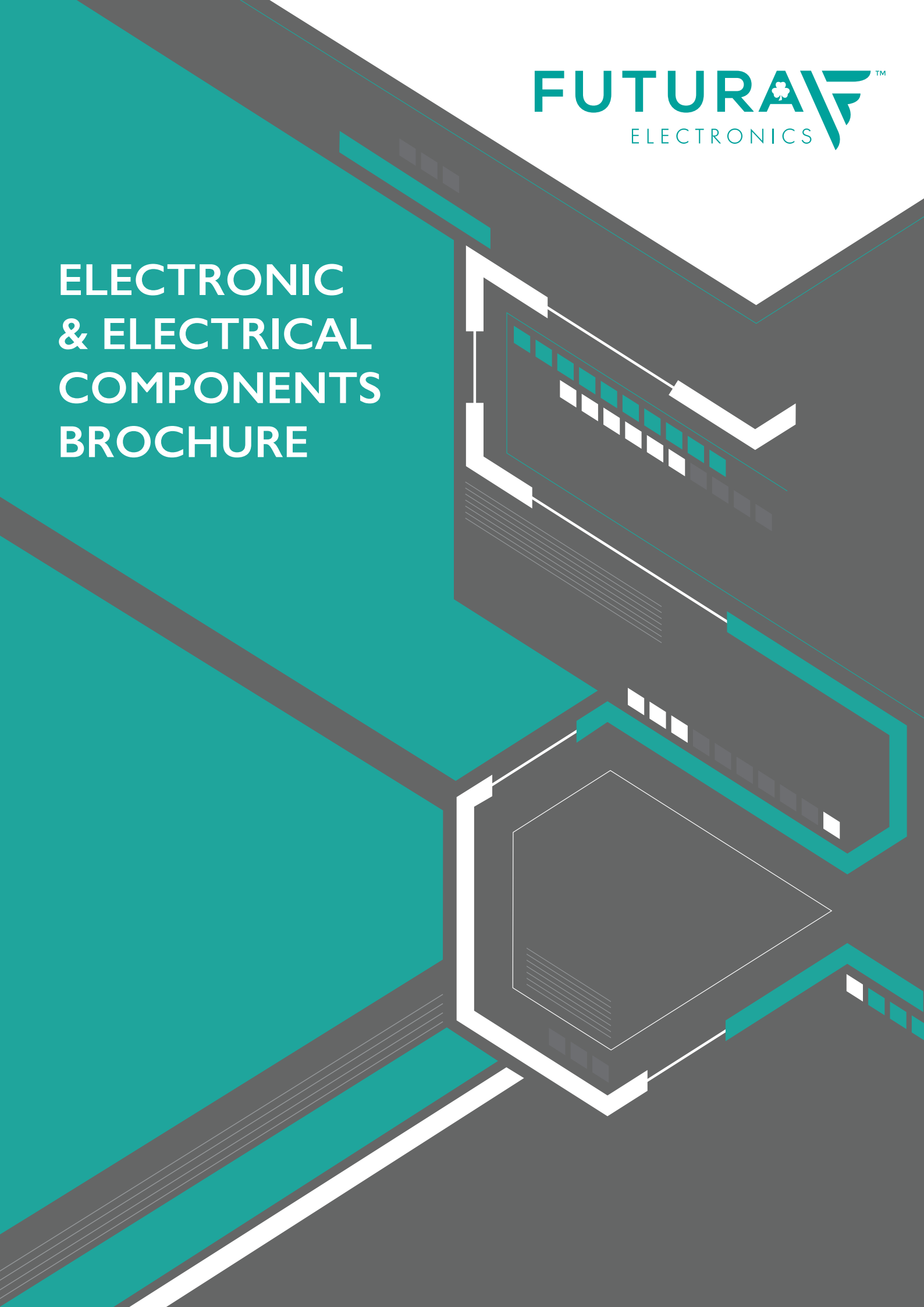


ELECTRONIC & ELECTRICAL COMPONENTS BROCHURE



OUR BRANDS



antenva

Apacer



DIPTRONICS



ABOUT US

Welcome to Futura Electronics

At Futura Electronics, we are proud to be one of Ireland's leading distributors of high-quality electronic and electrical components, serving a wide spectrum of industries from automation and medical to industrial, telecom, and IoT applications. Based in Balbriggan, Co. Dublin, we have built a reputation for excellence in product selection, technical expertise, and customer-focused service.

For over 40 years, we have supported engineers, designers, and procurement professionals with innovative component solutions that combine reliability, performance, and value. We partner with a global network of trusted manufacturers, enabling us to deliver a comprehensive portfolio of components.

As a company committed to long-term success, we embed sustainability and responsible business practices into everything we do. Futura holds an EcoVadis Bronze sustainability rating, and we are actively enhancing our environmental, social, and ethical practices across our operations and supply chain to drive continuous improvement.

We are proud to operate under a certified ISO 9001:2015 Quality Management System, a reflection of our focus on quality which governs every aspect of our business - from supplier selection and inventory control to order fulfilment and customer service. This globally recognised standard ensures that our processes are continually reviewed, measured, and improved.

Why Choose Futura?

- Decades of expertise in the Irish electronics market
- Strategic partnerships with world-class manufacturers
- Value-added services: custom cable assemblies, enclosure modifications, and labelling
- Strong focus on sustainability, ethical conduct, and environmental impact
- Fast, dependable logistics and dedicated account management
- ISO 9001:2015 certified, ensuring robust quality management, consistent service, and continuous improvement across all operations

In today's connected world, timelines are tight, and performance is critical. That's why Futura stands for more than just distribution—we're here to help you connect, control, innovate—and do it sustainably.

Explore our product ranges in the pages ahead—and when you're ready, our technical sales team is just a call or an email away.

Contact us:

For more enquiries on our product range, please contact our sales team on: **+353 1 8020044** or email **sales@futura.ie**



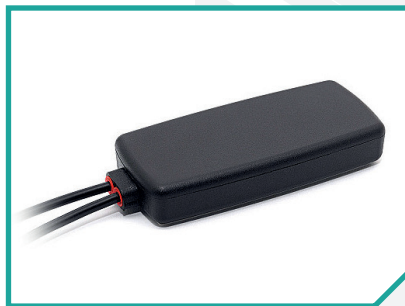
COMPONENT INDEX

Antenna	Page 03
Batteries, Battery Contacts & Holders	Page 04
Buzzers, Speakers & Microphones	Page 05
Cable Assemblies & Accessories	Page 06
Connectors	Page 07
Cooling - Fans & Heatsinks	Page 08
Crystals & Oscillators	Page 09
Enclosures	Page 10
Ethernet Connectors	Page 11
Hardware	Page 12
Industrial Connectors	Page 13
LED & Lighting	Page 14
Memory	Page 15
Power Supplies & Fuses	Page 16
Printers & Labelling	Page 18
Relays & Circuit Breakers	Page 19
Safety	Page 20
Switches	Page 21
Terminal Blocks	Page 22
Tools	Page 23

ANTENNA

COMBINATION ANTENNAS | CELLULAR | 3G/4G/5G ANTENNAS | 4G/LTE | ISM GNSS-GPS | TERRA UHF NB-IOT | LPWA

Cutting-edge antenna solutions available for connected devices across various industries. High-gain, multi-band antennas with custom design services and in-house testing are ideal for demanding environments. Sleek, embedded antennas are also offered for seamless integration into compact, space-limited devices. Supporting technologies such as 5G, LTE, GNSS, Wi-Fi, and Bluetooth, these solutions ensure reliable performance, global availability, and expert engineering support.



antenna

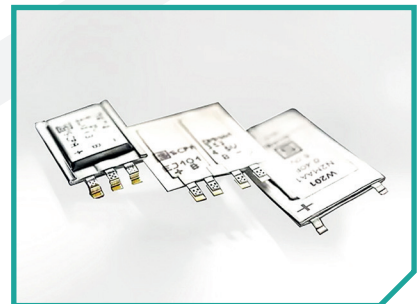
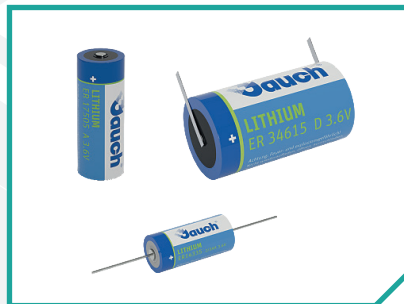
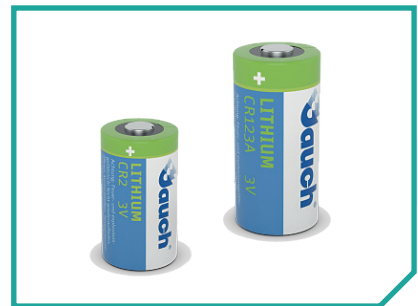
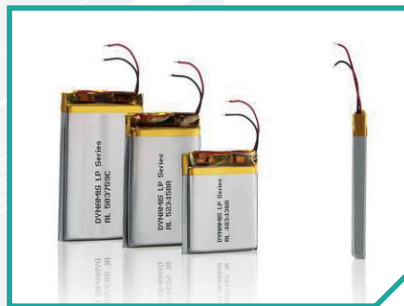
For more information on this product range please contact our sales team on:
+353 1 8020044 or email sales@futura.ie

BATTERIES, BATTERY CONTACTS & HOLDERS

**ALKALINE BATTERIES | LITHIUM CYLINDRICAL BATTERY | LITHIUM-ION BATTERY
LITHIUM MANGANESE DIOXIDE COIN CELLS | LITHIUM POLYMER BATTERY
LITHIUM THIONYL CHLORIDE BATTERIES | NIMH BATTERIES | BATTERY CONTACTS
BATTERY HOLDERS | SUPER CAPS | PRISMATIC SUPERCAPACITORS**

Our range of primary and rechargeable batteries ensures long life, stable voltage, and consistent performance under load. Precision-engineered holders and contacts are available in through-hole and surface-mount formats for secure, low-resistance connections. Designed for critical use in medical, industrial, and IoT systems, with options for wide temperature ranges, custom configurations, and full compliance.

Introducing our latest Prismatic Supercapacitors – high power density, ultra-low ESR, and a slim profile make them the ideal energy solution for space-constrained, high-demand electronic applications.



DYNAMIS
Batterien

EVE

Jauch
THE PULSE OF PROGRESS

KEYSTONE
ELECTRONIC COMPONENTS

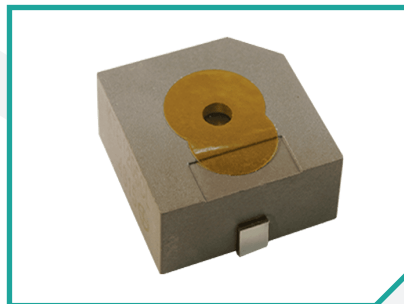
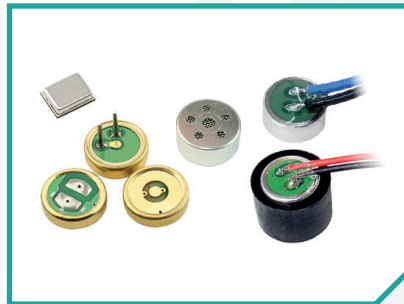
SCHURTER
ELECTRONIC COMPONENTS

For more information on this product range please contact our sales team on:
+353 1 8020044 or email **sales@futura.ie**

BUZZERS, SPEAKERS & MICROPHONES

**BUZZERS | DYNAMIC RECEIVER | MAGNETIC | MICROPHONE | PIEZO CERAMIC DISC
PIEZO INDICATOR | PIEZO SIREN | PIEZO TRANSDUCER | SPEAKER
SPEAKER MODULE/MIC MODULE**

Versatile selection of buzzers, speakers, microphones, and piezo ceramic discs delivering reliable acoustic solutions for both signal output and voice capture. Components are available in piezoelectric and magnetic types, with designs optimized for compact assemblies, wide frequency response, and consistent acoustic performance. Suitable for alarms, communication systems, portable devices, and industrial control panels, they support demanding environments where clarity and reliability matter.

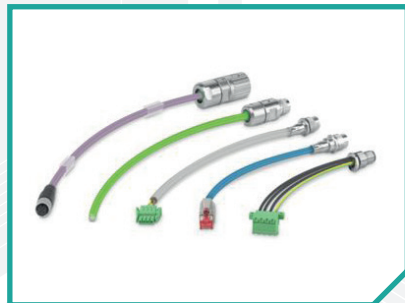


For more information on this product range please contact our sales team on:
+353 1 8020044 or email sales@futura.ie

CABLE ASSEMBLIES & ACCESSORIES

**CUSTOM CABLE ASSEMBLIES | FFC CABLE | IDC CABLE ASSEMBLIES
M8 & M12 CABLE ASSEMBLIES | PATCH CORDS | POWER & CONTROL CABLES
RF CABLE ASSEMBLIES | RIBBON CABLE ASSEMBLIES | RJ45 ASSEMBLIES
SWITCH ASSEMBLIES | USB CABLE ASSEMBLIES**

Our complete range of cable assemblies includes FFC cables, IDC assemblies, M8 & M12 assemblies, patch cords, power and control cables, RF and ribbon assemblies, RJ45, switch, and USB cables. Engineered for high performance and durability, these assemblies ensure secure power, signal, and data transmission across medical, industrial, and electronic applications. Options include shielded, multicore, and hybrid designs, with fully customizable solutions to meet demanding specifications.



PANDUIT

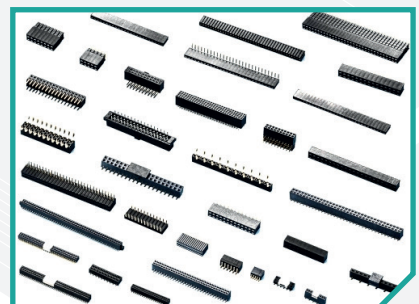
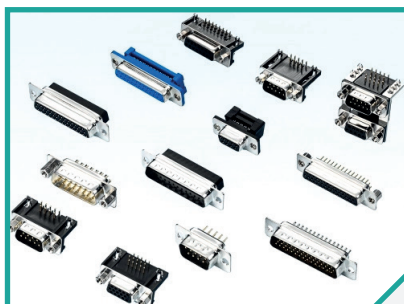
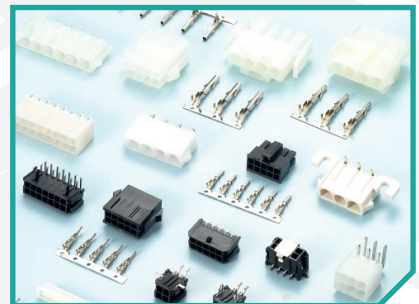
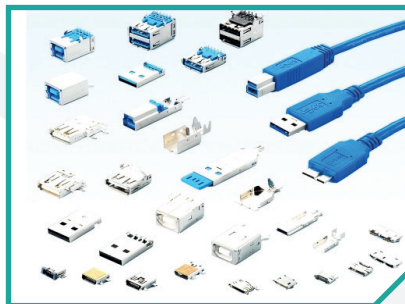
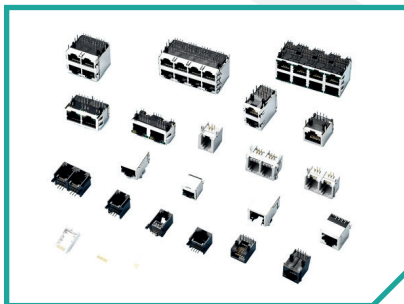
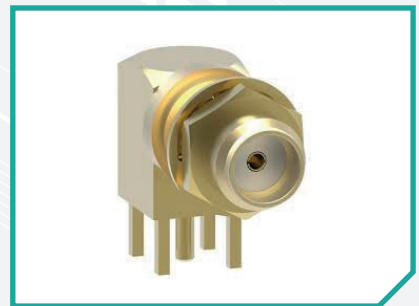
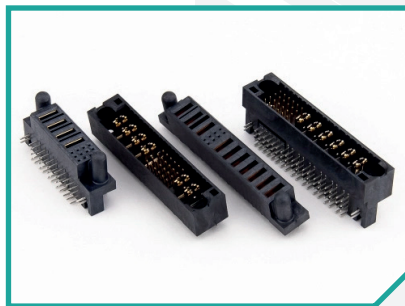
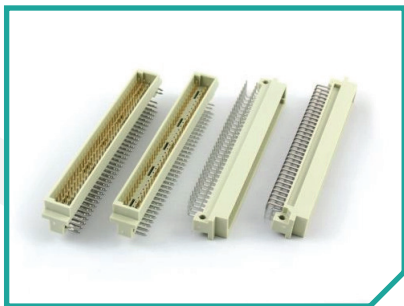


For more information on this product range please contact our sales team on:
+353 1 8020044 or email sales@futura.ie

CONNECTORS

**DIN41612 | D TYPE CONNECTORS | IC SOCKETS | IDC CONNECTORS
PCB INTERCONNECT | POWER CONNECTORS | RF CONNECTORS | RJ45 CONNECTORS
USB CONNECTORS | WIRE TO BOARD CONNECTORS**

We supply a broad range of high-performance connectors for power, signal, and high-speed data across board-to-board, wire-to-board, and I/O applications. Designed for reliability and efficiency, these connectors suit everything from compact devices to demanding industrial and communication systems.

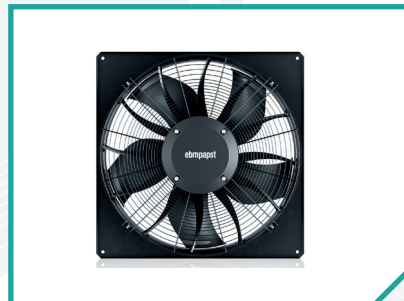
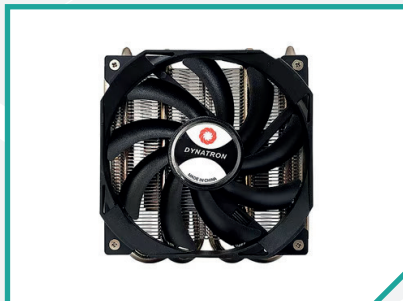
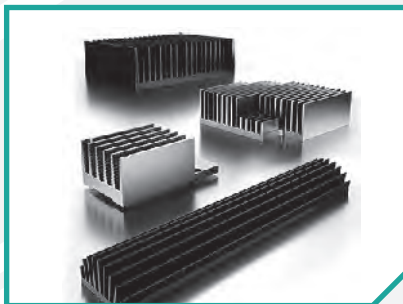
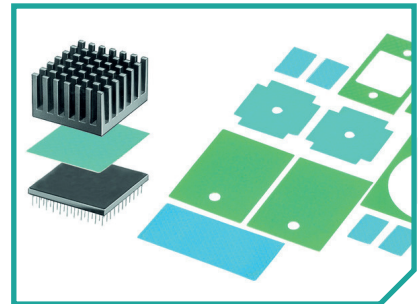
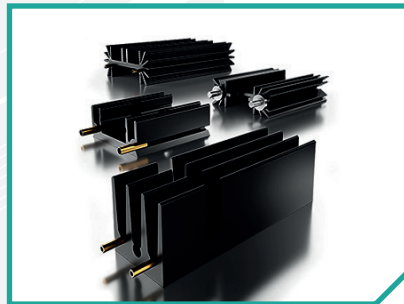


For more information on this product range please contact our sales team on:
+353 1 8020044 or email **sales@futura.ie**

COOLING - FANS & HEATSINKS

HEATSINKS | FANS

High-efficiency axial and blower fans, performance-optimized heatsinks, and thermally conductive foils for heat transfer and gap filling. Designed for demanding environments, these components support both active and passive cooling in industrial, telecom, and embedded systems. Options are available for high airflow, low noise, and custom mechanical integration.

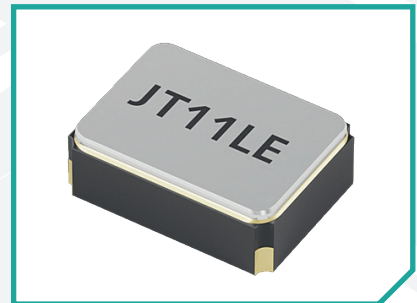
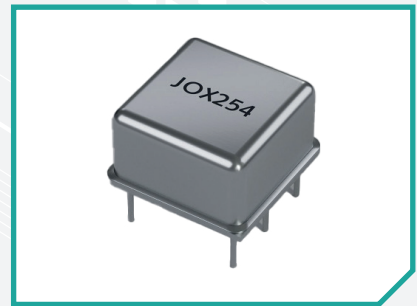
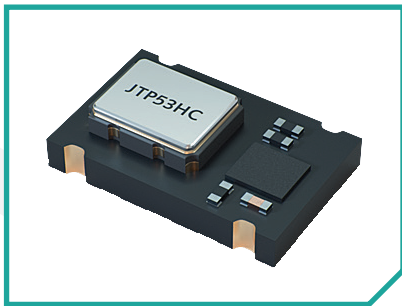


For more information on this product range please contact our sales team on:
+353 1 8020044 or email sales@futura.ie

CRYSTALS & OSCILLATORS

**TCXO CLIPPED SINE | TCXO GPS CLIPPED SINE | TCXO HCMOS | VCTXO CLIPPED SINE
VCXO HCMOS | XO HCMOS | FULL METAL CRYSTAL | SMD GLASS SEAL CRYSTAL
SMD METAL CRYSTAL | SMD SEAM SEAL CRYSTAL | SMD SEAM SEAL FOR WIRELESS
TUNING FORK CRYSTAL SMD | TUNING FORK CRYSTAL TIN**

Precision quartz crystals, crystal oscillators, and MEMS timing devices engineered for stable and accurate frequency generation. Available in a wide range of package sizes and frequencies, these components support tight tolerance, low phase noise, and extended temperature ranges. Ideal for timing-critical applications in IoT, industrial, automotive, and medical electronics, solutions include standard and custom configurations with options for TCXO, VCXO, and low-power designs.

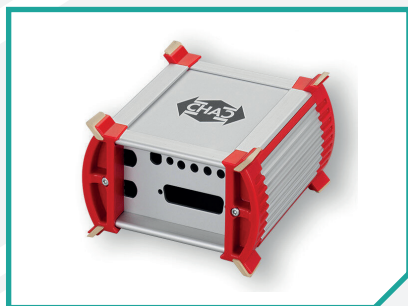
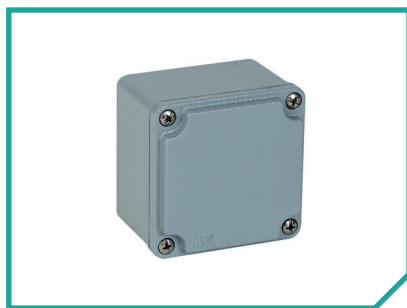
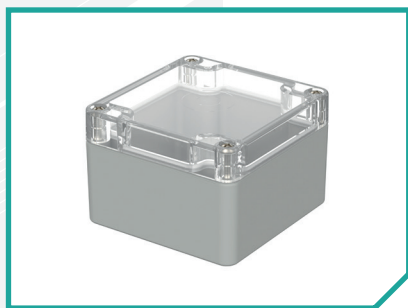
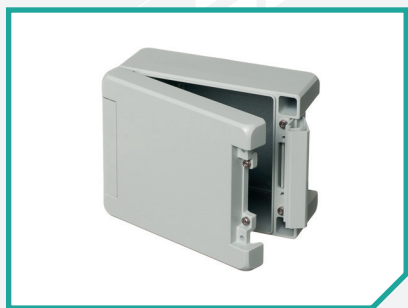


For more information on this product range please contact our sales team on:
+353 1 8020044 or email sales@futura.ie

ENCLOSURES

ABS ENCLOSURES | ALUMINIUM ENCLOSURES | DIE CAST ENCLOSURES | ELECTRICAL ENCLOSURES | ENCLOSURE MODIFICATION | ENCLOSURES FOR ELECTRONICS INDUSTRIAL ENCLOSURES | IOT ENCLOSURES | RASPBERRY PI CASE

Industrial, electronic, and modular enclosures provide secure housing for components used in challenging environments. Available in plastic, metal, and die-cast aluminium, they offer IP-rated protection, optional EMC shielding, and customisation for cutouts, colours, and mounting. These solutions support DIN rail, wall, and panel installations, with variants suited for control cabinets, junction boxes, and field devices. Built for reliability, durability, and seamless integration across industrial, automation, energy, and electronic systems.

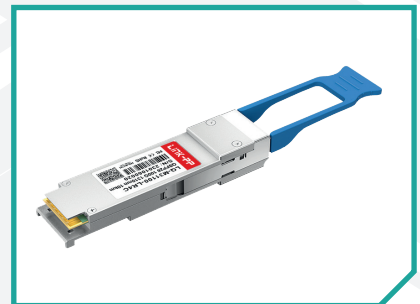
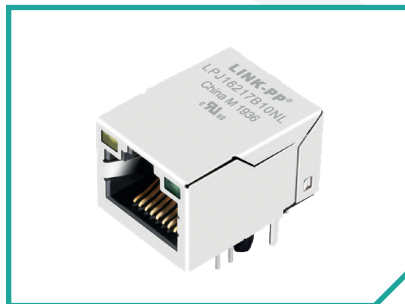
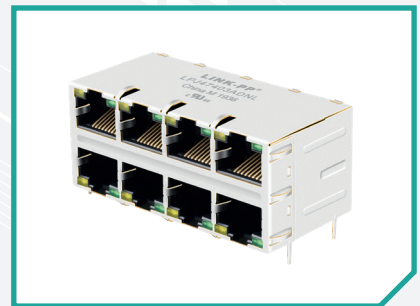
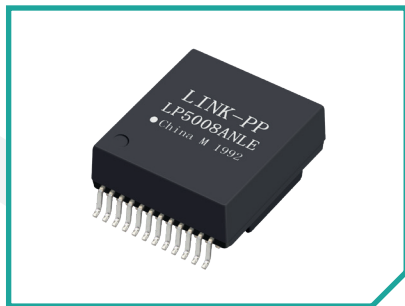


For more information on this product range please contact our sales team on:
+353 1 8020044 or email sales@futura.ie

ETHERNET CONNECTORS

LAN TRANSFORMER | ETHERNET CONNECTORS / MAGNETIC JACKS INTEGRATED RJ45 CONNECTORS | MODULAR JACKS | OPTICAL TRANSCEIVER

Designed for high-speed, robust data transmission in ethernet and networking systems. Magnetic jacks integrated common-mode chokes and PoE support in compact, shielded housings, ensuring EMI suppression and signal stability. LAN transformers provide galvanic isolation, impedance matching, and consistent performance across fast and gigabit Ethernet. SFP modules offer hot-swappable copper and fibre interfaces, supporting data rates up to 10Gbps for scalable, low-latency network design in telecom, data centres, and industrial environments.



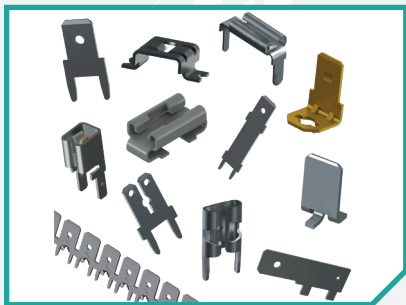
LINK-PP

For more information on this product range please contact our sales team on:
+353 1 8020044 or email sales@futura.ie

HARDWARE

**QUICK FIT TERMINALS | SPACERS | STANDOFFS | TEST POINTS | CABLE CLEATS
CABLE GLANDS | CABLE MANAGEMENT ACCESSORIES | CABLE TIES & WIRING
ACCESSORIES | EDGE CLIPS | STAINLESS STEEL CABLE TIES | STAINLESS STEEL CLEATS**

A versatile selection of mechanical and electrical hardware supporting reliable interconnection, PCB mounting, and efficient cable management. The range includes quick-fit terminals for fast tool-less connections, test points for streamlined diagnostics, and a variety of spacers and standoffs for precise board-level separation and support. Complimentary cable management components such as cleats, edge clips, and glands ensure organised, strain-relieved wiring. Designed for secure integration and long-term durability in electrical and electronic assemblies.



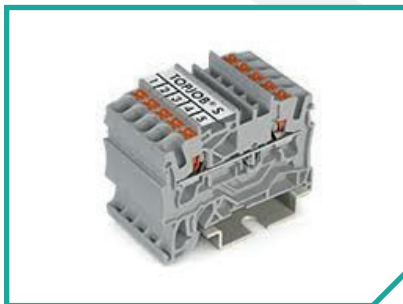
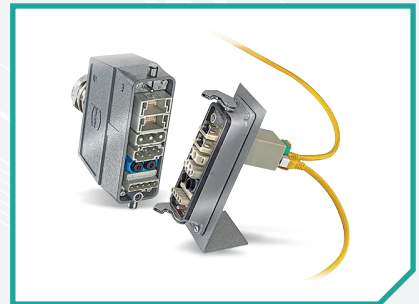
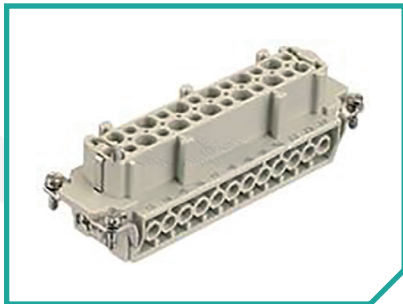
For more information on this product range please contact our sales team on:
+353 1 8020044 or email sales@futura.ie

INDUSTRIAL CONNECTORS

DIN RAIL TERMINALS | FOOD & BEVERAGE CONNECTORS

HARTING HAN INDUSTRIAL CONNECTORS | WATERPROOF CONNECTORS

Rugged connectors and assemblies for harsh environments, including power, signal, and data transmission in industrial automation, machinery, and process control. Solutions include heavy-duty rectangular connectors, IP-rated circular connectors, and application-specific variants for food & beverage, outdoor, and high-vibration settings. Engineered for secure mating, environmental sealing, and high current capacity, these components ensure reliable performance in demanding operational conditions.

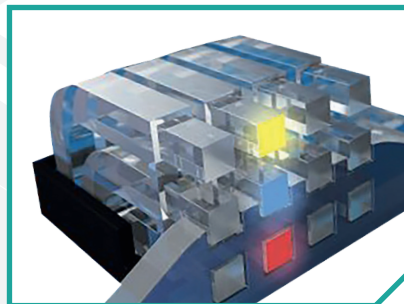
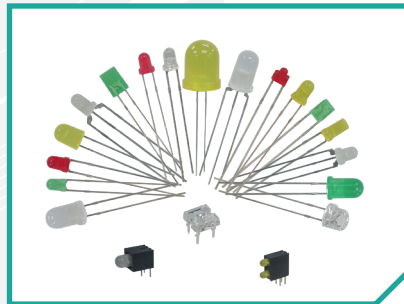


For more information on this product range please contact our sales team on:
+353 1 8020044 or email sales@futura.ie

LED & LIGHTING

**HIGH BRIGHTNESS LEDs | INFRARED LEDs & PHOTOTRANSISTORS | LCD DISPLAYS
LED DISPLAYS | LED HOLDERS | LED INDICATORS | LED SPACERS | LIGHTPIPES
LOW CURRENT LEDs | POWER LEDs | SMD LED | THROUGH HOLE LEDs
WHITE, SPECIAL & CUSTOM LEDS**

High-efficiency LEDs, SMD indicators, light guides, and backlighting components designed for visual signalling, illumination, and status indication. Available in a variety of colours, intensities, and package formats, these components support both board-level integration and panel applications. Light pipes and guides ensure precise light transmission in space-constrained designs, making these solutions ideal for industrial controls, medical devices, consumer electronics, and HMI interfaces.

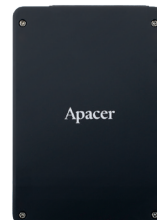
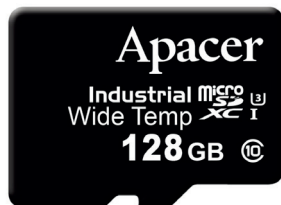


For more information on this product range please contact our sales team on:
+353 1 8020044 or email sales@futura.ie

MEMORY

**COMPACT FLASH | DRAM MODULES | FLASH CARDS | INDUSTRIAL MICRO SD
INDUSTRIAL SD CARD | INDUSTRIAL USB | MEMORY MODULES | POWER BANKS
SSD DRIVES | RUGGEDISED TABLETS / LAPTOPS**

High-reliability DRAM modules, SSDs, and flash storage devices engineered for industrial and embedded applications. Designed for data integrity and endurance, products offer features such as wide temperature support, power loss protection, conformal coating, and enhanced ECC. Available in multiple form factors, these memory solutions ensure stable operation in harsh environments like automation, transportation, medical, and defence systems.



Apacer

integral™

Kingston
TECHNOLOGY

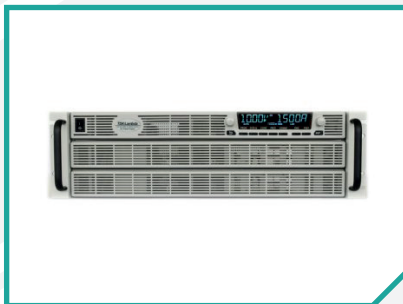
SP Silicon
Power

For more information on this product range please contact our sales team on:
+353 1 8020044 or email sales@futura.ie

POWER SUPPLIES & FUSES

**CHASSIS MOUNT POWER SUPPLIES | CONFIGURABLE POWER SUPPLIES
DC TO DC CONVERTER | DESKTOP POWER SUPPLIES | DIN RAIL POWER SUPPLIES
LED DRIVER | PLUG TOP POWER SUPPLIES | SWITCHED MODE POWER SUPPLIES**

High-efficiency AC-DC and DC-DC converters, programmable power supplies, and circuit protection components for industrial, medical, and automation use. Power supplies are available in compact formats with wide input ranges, active PFC, and remote voltage/current control. Models suitable for medical applications support low leakage and reinforced isolation.

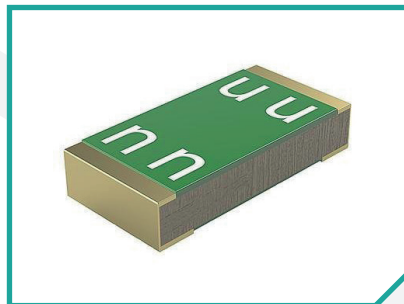
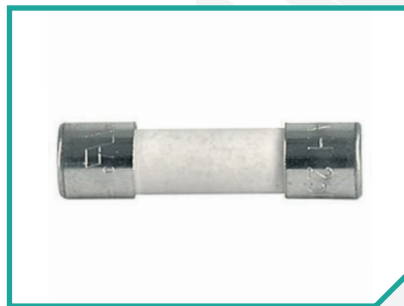


For more information on this product range please contact our sales team on:
+353 1 8020044 or email **sales@futura.ie**

POWER SUPPLIES & FUSES

FILTERS | FUSEHOLDERS | FUSES

Complementary protection components—fuses, holders, clips, and breakers—ensure reliable overcurrent protection and easy system integration. These solutions deliver stable power, safety, and flexibility across demanding environments.

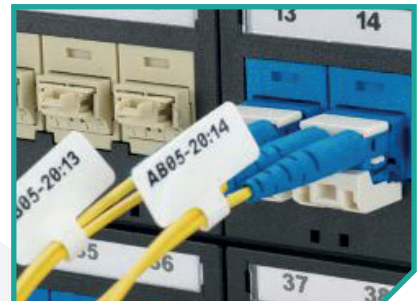


For more information on this product range please contact our sales team on:
+353 1 8020044 or email sales@futura.ie

PRINTERS & LABELLING

DESKTOP PRINTERS | EASY MARK PLUS LABELLING SOFTWARE HANDHELD PRINTERS | LABELS & IDENTIFICATION | SMART PRINTERS THERMAL TRANSFER PRINTERS

Rugged thermal transfer printers, durable labels, and a full range of accessories designed for efficient and reliable identification in industrial environments. Label materials—such as heat shrink, polyester, and self-laminating options—provide long-lasting performance under exposure to heat, abrasion, and chemicals. Supporting accessories like replacement printheads, ribbons, batteries, cutter blades, and carrying cases enhance usability, reduce downtime, and support field mobility.

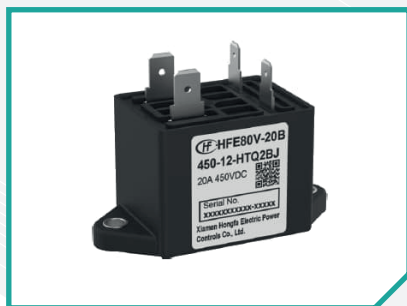
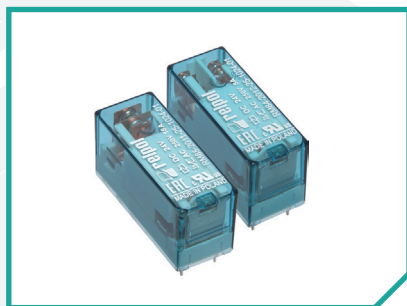
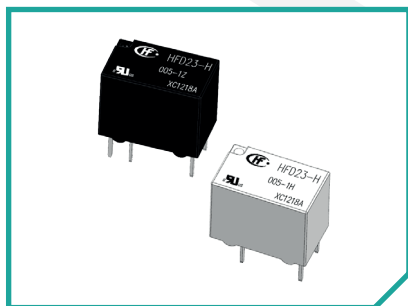


For more information on this product range please contact our sales team on:
+353 1 8020044 or email sales@futura.ie

RELAYS & CIRCUIT BREAKERS

**CIRCUIT BREAKERS | CONTACTORS | HIGH POWER RELAYS | INDUSTRIAL RELAY
INTERFACE RELAY | MINIATURE RELAY | POWER RELAYS | RELAYS FOR RAIL
SIGNAL RELAYS | SUB MINIATURE RELAY**

A comprehensive range of relays and circuit breakers designed for reliable switching, control, and protection in both electronic and industrial environments. Options include electromechanical and solid-state relays for PCB or DIN-rail mounting, supporting high switching loads and compact designs. Circuit breakers are available in miniature and modular formats with thermal or thermal-magnetic trip mechanisms, offering dependable protection against overloads and short circuits in control panels, machinery, and infrastructure systems.

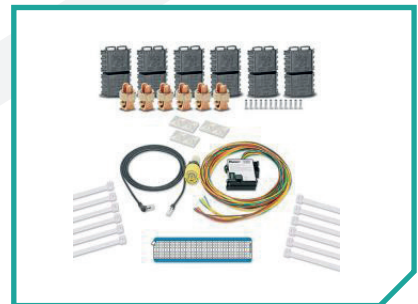


For more information on this product range please contact our sales team on:
+353 1 8020044 or email sales@futura.ie

SAFETY

LOCKOUT/TAGOUT | ABSENCE OF VOLTAGE TESTERS

Safety products designed to enhance protection during electrical maintenance and installation. Lockout/tagout devices provide secure isolation of energy sources to prevent accidental energization. Absence of voltage testers offer a fast, reliable method to verify de-energized conditions before access, increasing safety and reducing arc flash risks. Designed for ease of use and high visibility, these solutions are essential for workplace electrical safety protocols.



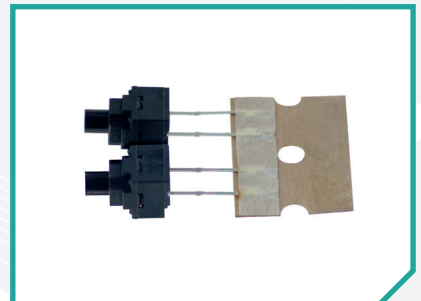
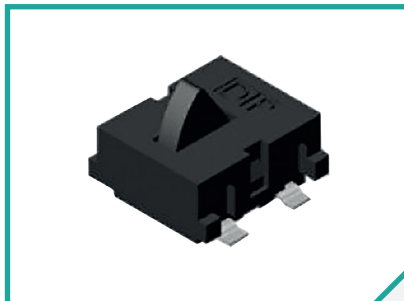
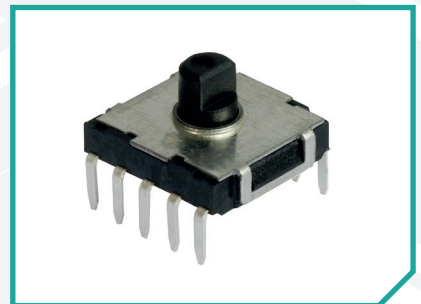
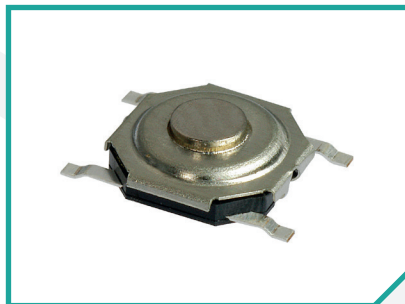
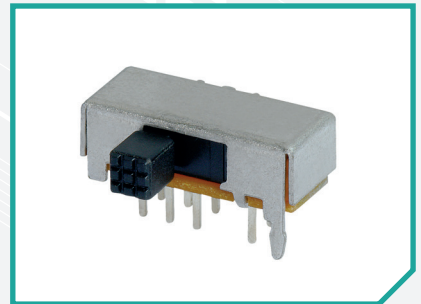
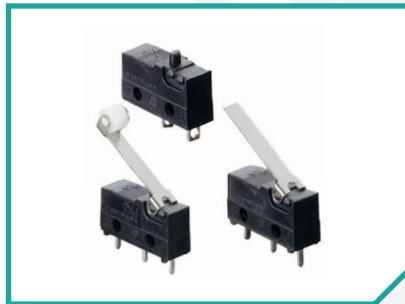
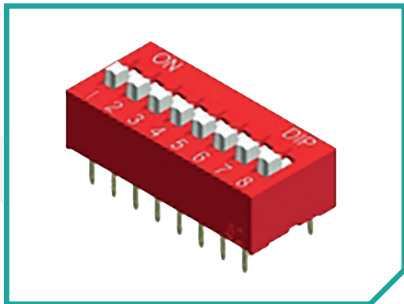
PANDUIT™

For more information on this product range please contact our sales team on:
+353 1 8020044 or email sales@futura.ie

SWITCHES

**DETECTOR SWITCHES | DIP SWITCHES | KEY SWITCHES & LOCKS | KEYPADS
MEMBRANE KEYPADS | MICRO SWITCHES | PANEL MOUNT SWITCHES
PUSH BUTTON SWITCHES | ROCKER SWITCHES | SLIDE SWITCHES | TACT SWITCHES
TOGGLE SWITCHES | VANDAL RESISTANT SWITCHES**

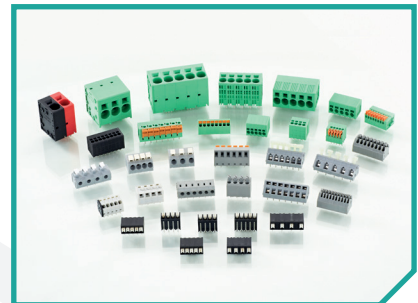
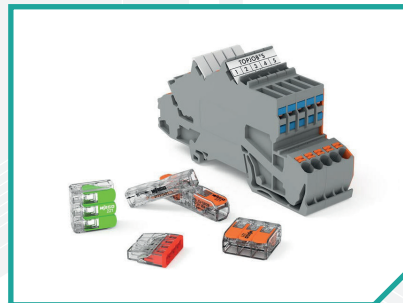
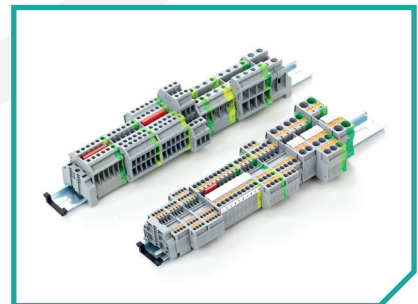
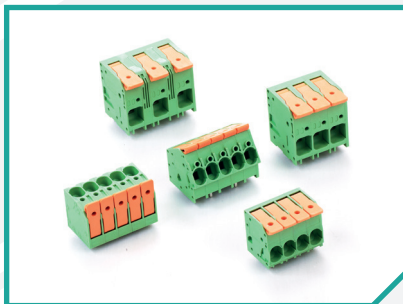
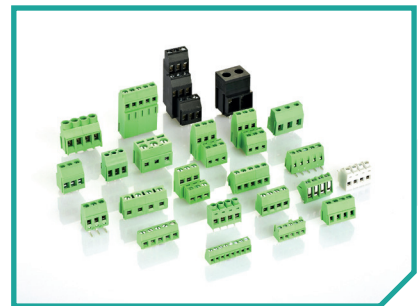
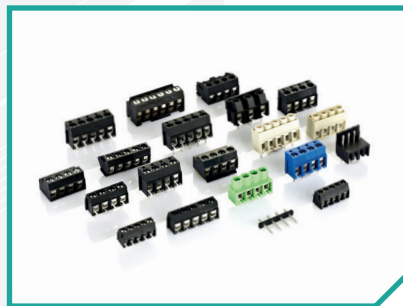
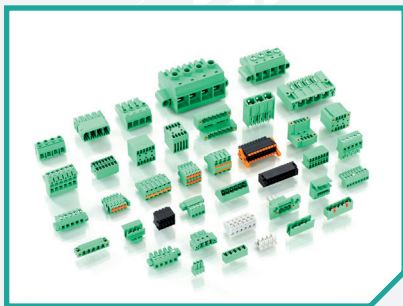
Tactile, toggle, DIP, push-button, snap-action, and power switches engineered for reliability in both signal and load switching applications. With options for PCB and panel mounting, and extended mechanical life, these components are suitable for use in industrial equipment, automation systems, control panels, and electronic devices. Designed for precision, safety, and durability, they ensure dependable performance in demanding operating conditions.



TERMINAL BLOCKS

**BARRIER TERMINAL BLOCK | DIN RAIL TERMINAL BLOCK | DIN RAIL TERMINALS
END PLATES | FEED THROUGH TERMINAL BLOCKS | FIELD WIRING TERMINAL BLOCKS
PCB TERMINAL BLOCK | PLUGGABLE TERMINAL BLOCK
RISING CLAMP TERMINAL BLOCK | SPRING CLAMP TERMINAL BLOCK
TERMINAL BLOCK MARKING | THROUGH WALL TERMINAL BLOCKS
TRANSFORMER TERMINAL BLOCKS**

Designed for secure, reliable electrical connections in industrial, automation, and control systems. Available in screw, spring, push-in, and pluggable configurations, these components support fast wiring, vibration resistance, and high current-carrying capacity. Modular designs allow flexible circuit distribution, while marking, test, and bridging accessories enhance usability and system integration.

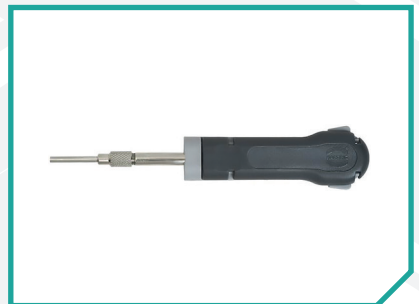
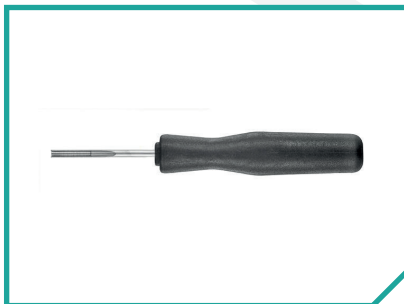


For more information on this product range please contact our sales team on:
+353 1 8020044 or email sales@futura.ie

TOOLS

CABLE TIE TOOLS | PAT 4.0 AUTOMATIC CABLE TIE INSTALLATION SYSTEM INSERTION, EXTRACTION & CRIMP TOOLS | REMOVAL TOOLS

Precision-engineered tools to support cable preparation, connector crimping, and terminal assembly across a variety of applications. Crimp tools, insertion tools, and cutting accessories are designed for repeatability, ergonomics, and durability—enhancing productivity in both workshop and on-site environments. These tools ensure consistent, high-quality results in electrical and electronic installations.



PANDUIT™

For more information on this product range please contact our sales team on:
+353 1 8020044 or email sales@futura.ie

OUR BRANDS



antenva

Apacer




DIPTRONICS



NOTES



 Unit 3 & 4, Balbriggan Business Park,
Balbriggan, Co. Dublin,
Ireland, K32 YV96

 +353 (0)1 802 0044

 sales@futura.ie

 www.futura.ie